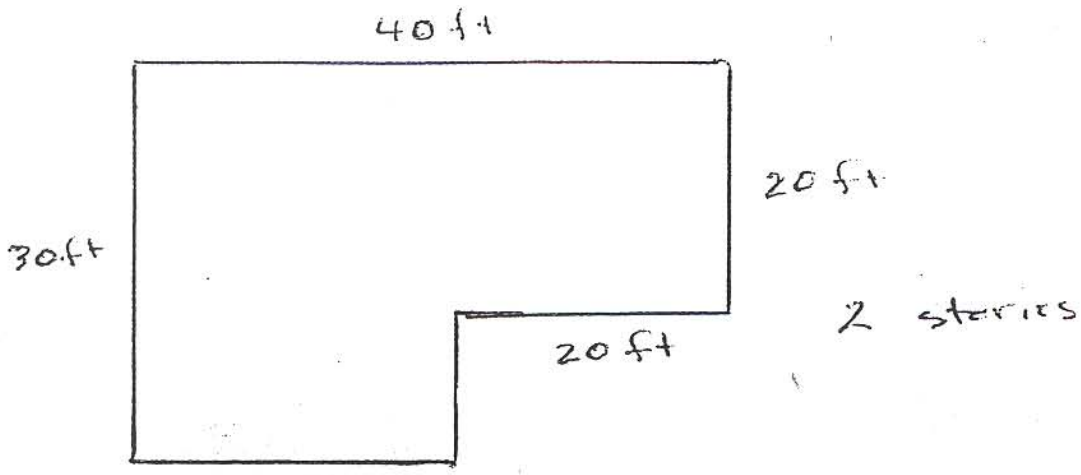


Benchmarking question (10 points)

You have studied benchmarking as a way to quantify the energy efficiency of a house. Here is another house which needs to be benchmarked. The outline of the two story house is shown below. Review of its energy bills showed it used 1200 therms of natural gas over the previous year. That same year had 5000 heating degree days (HDD). The article from Home Energy Online is attached to help guide your analysis. Show your work.



- a. (1 point) What is the square footage of this house?
- b. (1 point) How many Btu's did the house use in the year?
- c. (5 points) How many Btu's per square foot per heating degree day did the house use?
- d. (3 points) What percent of houses were more efficient than this house?

CONTINUE ON NEXT PAGE